

用於 T 型槽的螺帽 · DIN 508 EH 23010.

產品描述



材質

- 鋼，車修，鍍鋅，鈍化
- 熱處理鋼、鍛鍊的、品質10、染黑
- 不銹鋼 1.4301

組裝

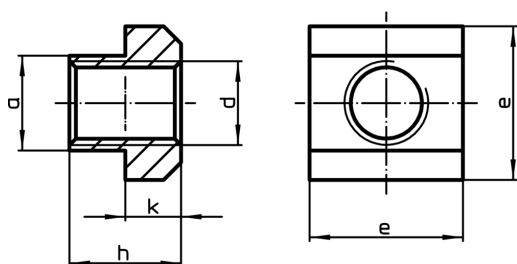
T 螺帽的全部負載容量只能被應用在保證螺絲旋入超過 T 螺帽的螺紋全長。

更多資訊

注意事項

特殊的樣式歡迎洽詢。


圖面




訂單資訊

T槽尺寸 [mm]	d	a	尺寸 e [mm]	h	k	用於T型槽 DIN 650 [mm]	測試力量DIN 508 F min [kN]	 [g]	RoHS	REACH	品號
鋼，車修，鍍鋅，鈍化											
5	M 4	4,6	9	6,5	3	5	7,0	2,4	RoHS 認證	contains no SVHC materials	23010.0051
6	M 5	5,6	10	8,0	4	6	11,4	3,4	RoHS 認證	contains no SVHC materials	23010.0061
8	M 6	7,6	13	10,0	6	8	16,0	8,3	RoHS 認證	contains no SVHC materials	23010.0081
10	M 6	9,6	15	12,0	6	10	16,0	14,0	RoHS 認證	contains no SVHC materials	23010.0103 ¹⁾
10	M 8	9,6	15	12,0	6	10	29,0	12,0	RoHS 認證	contains no SVHC materials	23010.0101
12	M 8	11,6	18	14,0	7	12	29,0	23,0	RoHS 認證	contains no SVHC materials	23010.0123 ¹⁾
12	M10	11,6	18	14,0	7	12	46,0	20,0	RoHS 認證	contains no SVHC materials	23010.0121
14	M10	13,6	22	16,0	8	14	46,0	38,0	RoHS 認證	contains no SVHC materials	23010.0143 ¹⁾
14	M12	13,6	22	16,0	8	14	67,0	34,0	RoHS 認證	contains no SVHC materials	23010.0141
16	M12	15,6	25	18,0	9	16	67,0	55,0	RoHS 認證	contains no SVHC materials	23010.0163 ¹⁾
16	M14	15,6	25	18,0	9	16	–	49,0	RoHS 認證	contains no SVHC materials	23010.0161 ¹⁾
18	M14	17,6	28	20,0	10	18	–	74,0	RoHS 認證	contains no SVHC materials	23010.0183 ¹⁾
18	M16	17,6	28	20,0	10	18	128,0	68,0	RoHS 認證	contains no SVHC materials	23010.0181

¹⁾ DIN 標準不包含這些尺寸。

T槽尺寸 [mm]	d	a	尺寸 [mm]			用於T型槽 DIN 650 [mm]	測試力量DIN 508 F min [kN]	 [g]	RoHS	REACH	品號
			e	h	k						
20	M16	19,6	32	24,0	12	20	128,0	116,0	RoHS 認證	contains no SVHC materials	23010.0203 ¹⁾
20	M18	19,6	32	24,0	12	20	-	107,0	RoHS 認證	contains no SVHC materials	23010.0201 ¹⁾
22	M18	21,6	35	28,0	14	22	-	162,0	RoHS 認證	contains no SVHC materials	23010.0223 ¹⁾
22	M20	21,6	35	28,0	14	22	196,0	149,0	RoHS 認證	contains no SVHC materials	23010.0221
24	M20	23,6	40	32,0	16	24	196,0	236,0	RoHS 認證	contains no SVHC materials	23010.0243 ¹⁾
24	M22	23,6	40	32,0	16	24	-	221,0	RoHS 認證	contains no SVHC materials	23010.0241 ¹⁾
28	M24	27,6	44	36,0	18	28	282,0	317,0	RoHS 認證	contains no SVHC materials	23010.0281
36	M30	35,5	54	44,0	22	36	448,0	585,0	RoHS 認證	contains no SVHC materials	23010.0361
42	M36	41,5	65	52,0	26	42	653,0	1000,0	RoHS 認證	contains no SVHC materials	23010.0421
48	M42	47,5	75	60,0	30	48	653,0	1500,0	RoHS 認證	contains no SVHC materials	23010.0481
54	M48	53,4	85	70,0	34	54	653,0	2264,0	RoHS 認證	contains no SVHC materials	23010.0541
熱處理鋼、鍛鍊的、品質10、染黑											
5	M 4	4,6	9	6,5	3	5	7,0	2,3	RoHS 認證	contains no SVHC materials	23010.0052
6	M 5	5,6	10	8,0	4	6	11,4	3,3	RoHS 認證	contains no SVHC materials	23010.0062
8	M 6	7,6	13	10,0	6	8	16,0	8,3	RoHS 認證	contains no SVHC materials	23010.0082
10	M 6	9,6	15	12,0	6	10	16,0	14,0	RoHS 認證	contains no SVHC materials	23010.0104 ¹⁾
10	M 8	9,6	15	12,0	6	10	29,0	13,0	RoHS 認證	contains no SVHC materials	23010.0102
12	M 8	11,6	18	14,0	7	12	29,0	23,0	RoHS 認證	contains no SVHC materials	23010.0124 ¹⁾
12	M10	11,6	18	14,0	7	12	46,0	20,0	RoHS 認證	contains no SVHC materials	23010.0122
14	M 6	13,6	22	16,0	8	14	16,0	43,0	RoHS 認證	contains no SVHC materials	23010.0146 ¹⁾
14	M 8	13,6	22	16,0	8	14	29,0	41,0	RoHS 認證	contains no SVHC materials	23010.0145 ¹⁾
14	M10	13,6	22	16,0	8	14	46,0	37,0	RoHS 認證	contains no SVHC materials	23010.0144 ¹⁾
14	M12	13,6	22	16,0	8	14	67,0	34,0	RoHS 認證	contains no SVHC materials	23010.0142
16	M 8	15,6	25	18,0	9	16	29,0	62,0	RoHS 認證	contains no SVHC materials	23010.0166 ¹⁾
16	M10	15,6	25	18,0	9	16	46,0	58,0	RoHS 認證	contains no SVHC materials	23010.0165 ¹⁾
16	M12	15,6	25	18,0	9	16	67,0	54,0	RoHS 認證	contains no SVHC materials	23010.0164 ¹⁾
16	M14	15,6	25	18,0	9	16	-	49,0	RoHS 認證	contains no SVHC materials	23010.0162 ¹⁾
18	M 8	17,6	28	20,0	10	18	29,0	89,0	RoHS 認證	contains no SVHC materials	23010.0187 ¹⁾
18	M10	17,6	28	20,0	10	18	46,0	85,0	RoHS 認證	contains no SVHC materials	23010.0186 ¹⁾
18	M12	17,6	28	20,0	10	18	67,0	98,0	RoHS 認證	contains no SVHC materials	23010.0185 ¹⁾

¹⁾ DIN 標準不包含這些尺寸。

T槽尺寸 [mm]	d	a	尺寸 [mm]			用於T型槽 DIN 650 [mm]	測試力量DIN 508 F min [kN]	 [g]	RoHS	REACH	品號
			e	h	k						
18	M14	17,6	28	20,0	10	18	-	75,0	RoHS 認證	contains no SVHC materials	23010.0184 ¹⁾
18	M16	17,6	28	20,0	10	18	128,0	68,0	RoHS 認證	contains no SVHC materials	23010.0182
20	M12	19,6	32	24,0	12	20	67,0	131,0	RoHS 認證	contains no SVHC materials	23010.0205 ¹⁾
20	M16	19,6	32	24,0	12	20	128,0	119,0	RoHS 認證	contains no SVHC materials	23010.0204 ¹⁾
20	M18	19,6	32	24,0	12	20	-	108,0	RoHS 認證	contains no SVHC materials	23010.0202 ¹⁾
22	M12	21,6	35	28,0	14	22	67,0	189,0	RoHS 認證	contains no SVHC materials	23010.0225 ¹⁾
22	M16	21,6	35	28,0	14	22	128,0	172,0	RoHS 認證	contains no SVHC materials	23010.0226 ¹⁾
22	M18	21,6	35	28,0	14	22	-	163,0	RoHS 認證	contains no SVHC materials	23010.0224 ¹⁾
22	M20	21,6	35	28,0	14	22	196,0	151,0	RoHS 認證	contains no SVHC materials	23010.0222
24	M16	23,6	40	32,0	16	24	128,0	262,0	RoHS 認證	contains no SVHC materials	23010.0246 ¹⁾
24	M20	23,6	40	32,0	16	24	196,0	237,0	RoHS 認證	contains no SVHC materials	23010.0244 ¹⁾
24	M22	23,6	40	32,0	16	24	-	221,0	RoHS 認證	contains no SVHC materials	23010.0242 ¹⁾
28	M16	27,6	44	36,0	18	28	128,0	375,0	RoHS 認證	contains no SVHC materials	23010.0286 ¹⁾
28	M20	27,6	44	36,0	18	28	196,0	349,0	RoHS 認證	contains no SVHC materials	23010.0284 ¹⁾
28	M22	27,6	44	36,0	18	28	-	332,0	RoHS 認證	contains no SVHC materials	23010.0283 ¹⁾
28	M24	27,6	44	36,0	18	28	282,0	320,0	RoHS 認證	contains no SVHC materials	23010.0282
32	M27	31,5	50	40,0	20	32	-	460,0	RoHS 認證	contains no SVHC materials	23010.0322 ¹⁾
36	M24	35,5	54	44,0	22	36	282,0	663,0	RoHS 認證	contains no SVHC materials	23010.0364 ¹⁾
36	M30	35,5	54	44,0	22	36	448,0	582,0	RoHS 認證	contains no SVHC materials	23010.0362
42	M36	41,5	65	52,0	26	42	653,0	996,0	RoHS 認證	contains no SVHC materials	23010.0422
48	M42	47,5	75	60,0	30	48	653,0	1500,0	RoHS 認證	contains no SVHC materials	23010.0482
54	M48	53,4	85	70,0	34	54	653,0	2100,0	RoHS 認證	contains no SVHC materials	23010.0542
不銹鋼 1.4301											
8	M 6	7,6	13	10,0	6	8	16,0	8,5	RoHS 認證	contains no SVHC materials	23010.0721
10	M 8	9,6	15	12,0	6	10	29,0	13,0	RoHS 認證	contains no SVHC materials	23010.0731
12	M10	11,6	18	14,0	7	12	46,0	20,0	RoHS 認證	contains no SVHC materials	23010.0741
14	M12	13,6	22	16,0	8	14	67,0	34,0	RoHS 認證	contains no SVHC materials	23010.0751
16	M14	15,6	25	18,0	9	16	-	51,0	RoHS 認證	contains no SVHC materials	23010.0761 ¹⁾
18	M16	17,6	28	20,0	10	18	128,0	70,0	RoHS 認證	contains no SVHC materials	23010.0781

¹⁾ DIN 標準不包含這些尺寸。

應用範例

