

## 定位梢·有孔 類似 DIN 6321 EH 22630.

### 產品描述

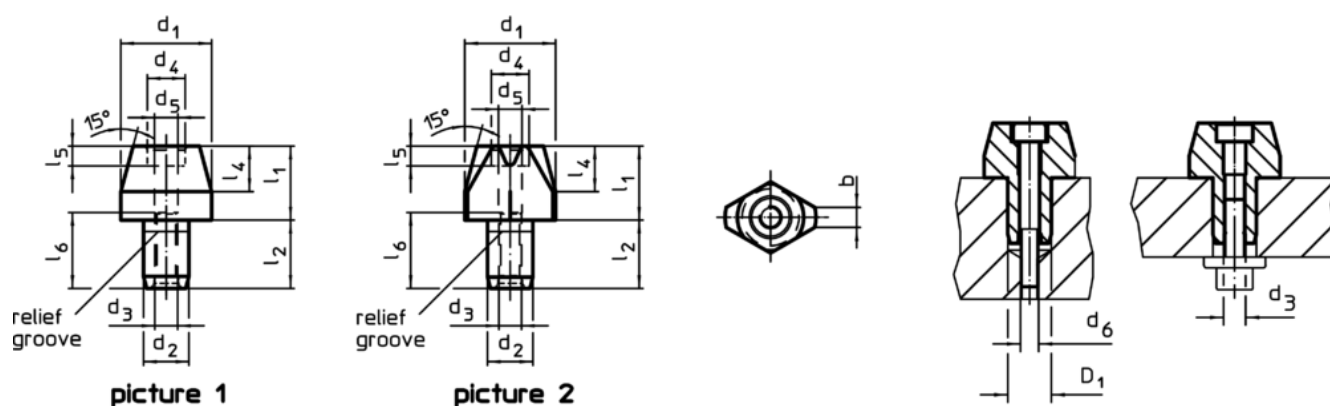


圓柱形定位銷定位在公差孔工件並且還可以用作止動。  
平坦的定位針用於克服銷孔之間的公差差異或定位僅在一個方向的元件。  
除了尺寸6之外，藉由上到下的鎖附可能性增加了安全性(也可用來拆卸)。外部的尺寸類似於DIN 6321。

### 材質

- 表面硬化鋼，表面硬化，染黑和研磨


### 圖面



### 訂單資訊

d <sub>1</sub> g6	l <sub>1</sub>	b	d <sub>2</sub> k6	l <sub>2</sub>	d <sub>3</sub>	尺寸 [mm]						定位孔 D <sub>1</sub> H7 [mm]	重量 [g]	RoHS	REACH	品號	
						d <sub>4</sub>	l <sub>4</sub>	d <sub>5</sub>	l <sub>5</sub>	d <sub>6</sub>	l <sub>6</sub>						
定位梢，圓，有孔 – 相片 1																	
6	7	-	4	6	-	-	4	2,1	-	M2	-	4	1,2	RoHS 認證	contains no SVHC materials	22630.0220 <sup>1)</sup>	
6	12	-	4	6	-	-	4	2,1	-	M2	-	4	2,9	RoHS 認證	contains no SVHC materials	22630.0221 <sup>1)</sup>	
8	10	-	6	9	M3	-	6	2,6	-	M2,5	10	6	4,2	RoHS 認證	contains no SVHC materials	22630.0222	
8	16	-	6	9	M3	-	6	2,6	-	M2,5	10	6	6,4	RoHS 認證	contains no SVHC materials	22630.0223	
10	10	-	6	9	M3	5,0	6	2,6	2,6	M2,5	10	6	6,1	RoHS 認證	contains no SVHC materials	22630.0224	
10	18	-	6	9	M3	5,0	6	2,6	2,6	M2,5	10	6	10,0	RoHS 認證	contains no SVHC materials	22630.0225	
12	10	-	6	9	M3	5,0	6	2,6	2,6	M2,5	10	6	8,0	RoHS 認證	contains no SVHC materials	22630.0226	
12	18	-	6	9	M3	5,0	6	2,6	2,6	M2,5	10	6	15,0	RoHS 認證	contains no SVHC materials	22630.0227	
16	13	-	8	12	M4	6,5	8	3,3	3,1	M3	13	8	19,0	RoHS 認證	contains no SVHC materials	22630.0228	
16	22	-	8	12	M4	6,5	8	3,3	3,1	M3	13	8	32,0	RoHS 認證	contains no SVHC materials	22630.0229	

<sup>1)</sup> 只能從上面固定

d <sub>1</sub> g6	l <sub>1</sub>	b	d <sub>2</sub> k6	l <sub>2</sub>	d <sub>3</sub>	尺寸						定位孔 D <sub>1</sub> H7 [mm]	 [g]	RoHS	REACH	品號
						d <sub>4</sub>	l <sub>4</sub>	d <sub>5</sub>	l <sub>5</sub>	d <sub>6</sub>	l <sub>6</sub>					
20	15	-	12	18	M6	10,0	9	5,2	5,1	M5	19	12	38,0	RoHS 認證	contains no SVHC materials	22630.0230
20	25	-	12	18	M6	10,0	9	5,2	5,1	M5	19	12	60,0	RoHS 認證	contains no SVHC materials	22630.0231
25	15	-	12	18	M6	10,0	9	5,2	5,1	M5	19	12	58,0	RoHS 認證	contains no SVHC materials	22630.0232
25	25	-	12	18	M6	10,0	9	5,2	5,1	M5	19	12	96,0	RoHS 認證	contains no SVHC materials	22630.0233
定位梢，平，有孔 - 相片 2																
6	7	1,0	4	6	-	-	4	2,1	-	M2	-	4	1,0	RoHS 認證	contains no SVHC materials	22630.0240 <sup>1)</sup>
6	12	1,0	4	6	-	-	4	2,1	-	M2	-	4	1,9	RoHS 認證	contains no SVHC materials	22630.0241 <sup>1)</sup>
8	10	1,6	6	9	M3	-	6	2,6	-	M2,5	10	6	3,4	RoHS 認證	contains no SVHC materials	22630.0242
8	16	1,6	6	9	M3	-	6	2,6	-	M2,5	10	6	4,4	RoHS 認證	contains no SVHC materials	22630.0243
10	10	2,5	6	9	M3	5,0	6	2,6	2,6	M2,5	10	6	4,6	RoHS 認證	contains no SVHC materials	22630.0244
10	18	2,5	6	9	M3	5,0	6	2,6	2,6	M2,5	10	6	7,3	RoHS 認證	contains no SVHC materials	22630.0245
12	10	2,5	6	9	M3	5,0	6	2,6	2,6	M2,5	10	6	6,1	RoHS 認證	contains no SVHC materials	22630.0246
12	18	2,5	6	9	M3	5,0	6	2,6	2,6	M2,5	10	6	10,0	RoHS 認證	contains no SVHC materials	22630.0247
16	13	3,5	8	12	M4	6,5	8	3,3	3,1	M3	13	8	15,0	RoHS 認證	contains no SVHC materials	22630.0248
16	22	3,5	8	12	M4	6,5	8	3,3	3,1	M3	13	8	22,0	RoHS 認證	contains no SVHC materials	22630.0249
20	15	5,0	12	18	M6	10,0	9	5,2	5,1	M5	19	12	30,0	RoHS 認證	contains no SVHC materials	22630.0250
20	25	5,0	12	18	M6	10,0	9	5,2	5,1	M5	19	12	44,0	RoHS 認證	contains no SVHC materials	22630.0251
25	15	5,0	12	18	M6	10,0	9	5,2	5,1	M5	19	12	41,0	RoHS 認證	contains no SVHC materials	22630.0252
25	25	5,0	12	18	M6	10,0	9	5,2	5,1	M5	19	12	62,0	RoHS 認證	contains no SVHC materials	22630.0253

<sup>1)</sup> 只能從上面固定

應用範例

